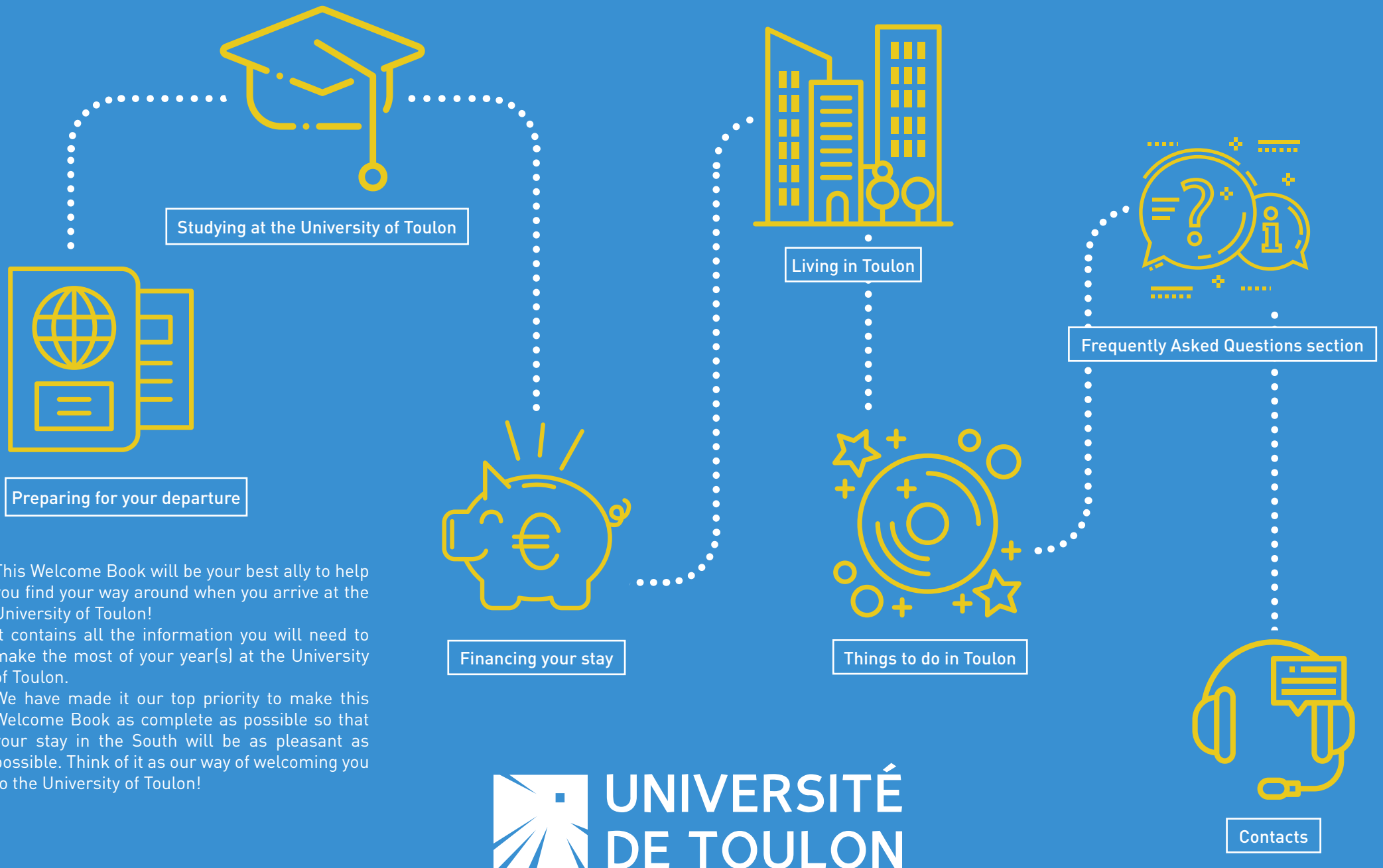


# WELCOME BOOK - UNIVERSITY OF TOULON



# CONTENTS



## PREPARING FOR YOUR DEPARTURE

- The Southern Region 4
- Toulon or the city of the South 4
- Visa, passport and residence permit 5



## STUDYING AT THE UNIVERSITY OF TOULON

- The University of Toulon 8
- How to get to Toulon and to the University? 10
- Studying in France 11
- French university calendar 11
- Holidays 12
- The French teaching rhythm 12
- The first days 12
- The International Relations Department (SRI) 13
- Community life 14
- The University Physical and Sports Activities Department (SUAPS) 14
- The Language Resource Center (CRL) 15
- Buddy Program 15
- University Libraries 15
- Perfecting your French 16



## FINANCING YOUR STAY

- Housing aid 18
- Opening a bank account in France 18
- Finding a student job 18



## LIVING IN TOULON

- Getting around Toulon 20
- Accommodations, apartment rentals and shared accommodations 20
- Catering 21
- Mobile phone subscriptions and Internet access providers 21
- Health 22



## THINGS TO DO IN TOULON

- Museums 24
- Theaters 25
- Concert halls and shows 25
- Cultural activities at UTLN 25
- Where to practice sports 25
- Tourist attractions 26
- Extend your residence permit or prepare for your return 27



## FREQUENTLY ASKED QUESTIONS SECTION

- How do I activate my online student account? 29
- How do I log in to the various digital services of the university? 29
- How do I access my online timetable? 29
- How do I access my grades and exam results? 29
- I would like to contact a teacher, how do I do this? 29
- How do I pay with my student card? 29
- How do I connect to the Internet at the University? 29
- I have a question that is not in the F.A.Q, who should I contact? 29



## CONTACTS

- International Relations Department 31
- Emergency telephone numbers 31



# PREPARING FOR YOUR DEPARTURE



## ▣ THE SOUTHERN REGION

The sunny holiday destination “par excellence”, the Southern Region shines all over France and the rest of the world with its gorgeous panoramas and pleasant climate.

Bathed in light by the Mediterranean Sea and rich in traditions from French villages and neighboring countries, the Southern Region has the largest expanse of non-urbanized natural areas among the French regions.

In addition, the Southern Region is considered, after Île-de-France, to be the region of culture. Endowed with an exceptional historical heritage, it hosts more than 350 of the greatest festivals, such as the internationally known and praised Cannes Film Festival.

For more information about the Southern Region, do not hesitate to consult the website of “le Comité régional du Tourisme Sud” (Regional Tourism Committee of the South): <http://www.tourismepaca.fr>

## ▣ TOULON OR THE CITY OF THE SOUTH

Situated between sea and mountains, Toulon is established on the shores of the Mediterranean Sea, along the bay of Toulon. Its sand and pebble beaches run along the Mediterranean coast, making it the major harbor city in the Southern Region, with the largest military naval base in France, called the “Arsenal” (Toulon is the main French «Defense Base»). In addition, Toulon is surrounded by mountains and hills. Wishing to preserve the natural biodiversity that makes it so charming, the city of Toulon is committed to an ambitious policy of environmental protection and sustainable development, with a view to improving the quality of life.

Toulon is also a very dynamic city. Commerce, administrations, employment and research play an important role in the city’s economic activity.

Moreover, Toulon is a cultural center with a regional dimension. It has in particular an opera house, a regional National Conservatory, several museums, concert halls (for instance the Zénith-Oméga), and the Théâtre Liberté.

For more information about the city of Toulon, do not hesitate to consult the website of “l’Office de Tourisme de Toulon” (Toulon Tourist Office): <https://toulontourisme.com>







## ■ VISA, PASSPORT AND RESIDENCE PERMIT

### ■ PASSPORT

All foreign students must be in possession of a valid passport to come and study in France. For students from the European Union, the Identity Card is sufficient.

### ■ VISA

#### Which type of visa do I have to choose?

There is an official website that explains in detail all the formalities for obtaining visas for France. Do not hesitate to consult it for any information to prepare for your academic stay in France:

<https://france-visas.gouv.fr/web/france-visas/accueil>

#### Application procedure

You can apply for a student visa at the French Consulate nearest to your place of residence, or even at the French Embassy.

#### The documents to provide for the visa application

- The visa application form filled in beforehand.
- A recent passport-sized identity photo
- A valid passport
- A photocopy of the main pages of the passport
- Proof of travel insurance
- A financial guarantee covering the entire stay
- Documents proving your enrolment at the University of Toulon

#### Register with the OFII

If you have the «long-term» student visa, you must register with “l’Office Français de l’Immigration et de l’Intégration” (OFII) (the French Office for Immigration and Integration). To do this, a form will be issued to you by the Consulate at the same time as your visa.

You must fill it in and send it within 3 months of your arrival in France to the territorial office of the OFII nearest to your place of residence.

Once the form has been received, the OFII may ask you to undergo a compulsory medical examination if it has not been carried out beforehand, either in your country of origin or during a visit to your host country. You can make an appointment at the University Health Center located in La Garde to carry out this medical check-up.





## ■ ACCESS TO HEALTHCARE

### Signing up for “la Sécurité sociale” (the French healthcare system):

In order to be entitled to French healthcare, you will have to go through a few formalities depending on your country of origin.

If you are a student from a European Union country, Iceland, Lichtenstein, Norway or Switzerland, you will need to obtain a European health insurance card. If you already have this card, you will be able to have access to healthcare in France without having to take any further steps.

If you are a student from a non-European Union country, and will be arriving in France for the next academic year, you will need to register with “la Caisse Primaire d’Assurance Maladie” (CPAM) (local health insurance office) via the website:

<https://etudiant-etranger.ameli.fr>

There are a few special cases to be taken into account during your application process:

- If you are a Canadian student from Quebec, you do not need to register with the student health insurance following an agreement between the “Régie d’Assurance Maladie du Québec” (RAMQ) and the Caisse Primaire d’Assurance Maladie (CPAM). However, you must be in possession of form SE 401-Q-102 bis or SE 401-Q-106 in the case of an inter-university exchange program. All you have to do is show this document when you do your administrative registration. If you do not have this document, you will have to be affiliated with the student health insurance for foreigners like any other non-European student.

- If you receive a scholarship from the French government, you are automatically affiliated with the student health insurance. You do not have to pay the corresponding contribution.
- If you are enrolled in several institutions for the same academic year, you need only one affiliation to the student health insurance.

Once these steps have been completed, the reimbursement of your medical consultations and procedures by the insurance varies between 30 and 70% of medical expenses. You can keep track of your reimbursements and obtain important information by creating an account at <https://www.ameli.fr>.

Here are the essential telephone numbers you have to know:

- **112**: the European emergency number
- **15**: the number of the SAMU (Service d’Aide Médicale Urgente) (emergency medical assistance service)
- **18**: the number of the fire brigade
- **17**: the number of the police
- **36 24**: the emergency number for a doctor to come to your home if you are too ill to go out. This is a 24/7 service.



### Obtaining a complementary health insurance:

For French and international students, it is possible to subscribe to a complementary health insurance. Mutual insurance companies are optional but highly recommended, and are intended to reimburse costs not covered by the student’s compulsory health insurance. It is up to you to choose between all the existing complementary health insurance plans according to your needs.





[Preparing for your departure](#)

[Studying at the University of Toulon](#)

[Financing your stay](#)

[Living in Toulon](#)

[Things to do in Toulon](#)

[Frequently Asked Questions section](#)

[Contacts](#)



# STUDYING AT THE UNIVERSITY OF TOULON

3





## ■ THE TOULON - PORTE D'ITALIE CAMPUS

The Toulon campus has been located in the east of the city since 1995 with the creation of the Faculty of Law near the Porte d'Italie.

Since the start of the 2014 academic year, a new building at the cutting edge of innovation in the field of communication and transmedia has existed in this area. This new building, called the Pi building, welcomes nearly 3,000 students each year in the following disciplines:

- UFR Droit (Faculty of Law)
- UFR Sciences Economiques et de Gestion (Faculty of Economic and Management Sciences)
- UFR Ingémédia (Faculty of Information and Communication Sciences)
- Toulon MMI-IUT Department
- Institut d'Administration des Entreprises (IAE) (Institute of Business Administration)
- PhD School - Mediterranean Societies and Humanities

In the field of research, the Toulon - Ported'Italie campus brings together the Economic Law, Management, Humanities and Social Sciences laboratories. The campus also hosts the technical platforms and the Télomédia department, halfway between training and research activities.



## ■ THE DRAGUIGNAN CAMPUS

The Draguignan campus is made up of two sites:

- the Faculty of Law branch,
- the GEA department of the IUT.

The Draguignan Faculty of Law branch welcomes nearly 350 students each year, at the bachelor and master levels, and the Gestion des Entreprises et des Administrations (GEA) (Business and Administrative Management) Department of the IUT welcomes nearly 120 students each year.



Map of the Toulon - Porte d'Italie campus,  
Pi building & Faculty of Law



## ■ HOW TO GET TO TOULON AND TO THE UNIVERSITY?

### ■ FROM NICE AIRPORT

There are shuttles from Nice Airport to the railway station where you can take a train to Toulon. It is also possible to go to Terminal 1 to take the «Cars Phocéens de Nice à Brignoles» (Nice to Brignoles bus service). Line 20 of these buses leads from Nice to Aix-Marseille, with departures scheduled every day at 7:50 a.m. and 12:00 noon. In this case, we advise you to get off the bus in Brignoles where you can take a connection to Hyeres (line 2) and Toulon (line 7). It will take you two hours to get your connecting bus in Brignoles.

Nice bus station (close to the Palais des Expositions):  
16 avenue des Diablos - 06 300 Nice Phone +33 (0)4 93 85 62 15

### ■ FROM MARSEILLE PROVENCE AIRPORT

Once you arrive at Marseille airport, you will need to take a shuttle bus to the Marseille railway station and take a train to Toulon. Be careful, there is no direct bus to Toulon from Marseille. However, you can take a shuttle to Aix-en-Provence where you will find buses to Toulon.

### ■ FROM HYÈRES AIRPORT

From Hyères Airport, you will have to take the line 102 shuttle bus towards the Toulon bus station. Then, you will have to get off at the Hôtel de Ville stop, then take the line 103 bus towards La Garde (Université Nord stop) or take the 29AB bus at the Iles d'Or stop towards La Garde (Université Sud stop).

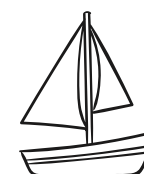
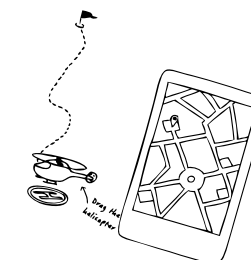
### ■ FROM THE TOULON TRAIN STATION

To get to the University of Toulon, take the 29AB bus towards La Garde (Université Sud stop) or line U towards La Garde (Université Nord stop).

### ■ FROM THE TOULON - PORTE D'ITALIE CAMPUS

Line U connects the Toulon campus with the La Garde campus (Université Nord stop).

Between buses, boats, trains, carpooling..., you have plenty of ways of going from one campus to the other. You can also use greener means of transportation: walking or cycling.





## STUDYING IN FRANCE

### THE ORGANIZATION OF TEACHING

In France, higher education is organized according to the LMD system: Licence (Bachelor's Degree) Master, Doctorat (PhD).

Each academic year is divided into 2 semesters, each representing 30 ECTS credits. Each semester is made up of several "Unités d'Enseignement" (UE) (Teaching Units) subdivided into "Eléments Constitutifs d'Unités d'Enseignement" (ECUE) (Teaching Unit Components).

There are 3 levels of study:

- The "Licence" (bac+3) (3 years after high school graduation), corresponding to 6 semesters, i.e. 180 ECTS credits
- The "Master" (bac+5) (5 years after high school graduation), corresponding to 4 additional semesters, i.e. 120 additional ECTS credits (grand total of 300)
- The "Doctorat" (bac+8) (8 years after high school graduation)

### CLASSES

At the University of Toulon, as in all French higher education institutions, there are two types of classes:

#### "Les cours magistraux" (lectures):

these are classes given by professors in lecture halls with 100 to 400 seats during which students take notes.

#### "Les travaux dirigés" (TD) (tutorials) and "les travaux pratiques" (TP) (practical classes):

tutorials and practical classes take place in small groups. They illustrate the lectures by putting into practice and deepening the theoretical knowledge presented during them.

In the university's professional training courses (technical university diplomas, professional bachelor's and master's degrees, engineering schools), internships, group projects, as well as practical classes and tutorials are offered.

### STUDENT EVALUATIONS

Two types of student evaluations coexist in French higher education:

- Continuous assessment, which makes it possible to validate the knowledge acquired with tests spread throughout the year in each subject taught.
- Exams, which concentrate knowledge assessment for all subjects over a few days. Exams are complete examinations, repeated twice a year.

Each diploma has its own examination rules that precisely define the methods of student evaluations.

At university, courses are usually grouped together into "Unités d'Enseignement" (UE) (Teaching Units) that can be capitalized. The diploma will be made up of several Teaching Units: some are compulsory, others optional. These Units are obtained once and for all.

### THE GRADING SYSTEM

In France the grading scale goes from 0 to 20. 0 is the worst grade and 20 is the best. The average is 10/20 (pronounced «10 out of 20»), it is used to validate the year.

To find out more about our rating system: [www.univ-tln.fr/rubrique/international-partir-a-letranger-charte-de-mobilite](http://www.univ-tln.fr/rubrique/international-partir-a-letranger-charte-de-mobilite) (international section-studying abroad - mobility charter).



## FRENCH UNIVERSITY CALENDAR

An academic year in France is divided into two semesters.

- The first takes place from September / October to the end of December / beginning of January depending on your training course.
- The second semester allows you to deepen and expand the knowledge acquired during the first semester. It takes place from January to the end of May / beginning of June. The second semester can have a shorter course period due to professional training internships in companies.

Each semester generally ends with a period of examinations, called "les partiels" (partial examinations) that will allow your teachers to assess the knowledge acquired during the semester and to evaluate you.

Depending on the training courses, the evaluation of your knowledge and skills is carried out by testing them through exercises. This will depend on the level of the training: practical or theoretical. The dates of the examination periods depend on your institution and your training. They will be communicated to you by your professors at the beginning of the academic year or during the year.

In France, the course periods are separated by four holiday periods of one to two weeks, depending on the institution and the training course. For school holiday purposes, France is divided into three zones: A, B and C.

The city of Toulon is located in zone B.







## ■ HOLIDAYS

You will find the university calendars by [clicking here](#):

- Autumn: End of October – beginning of November
- Christmas: End of December – beginning of January
- Winter: February
- Spring: April

## ■ THE FRENCH TEACHING RHYTHM

In France, and particularly at University, the hours of your classes are likely to change every day and every week. It is therefore necessary to check your online timetable every day to keep yourself informed.

The teaching week generally runs from Monday to Friday. However, some training courses may include Saturday classes.

A day of class in France starts no earlier than 8.00 a.m. and is usually divided into two parts (morning and afternoon), depending on lunchtime.

The French are used to having breakfast as soon as they wake up. Then, lunch is generally taken between 12:00 and 2:00 p.m. Sometimes, people take a mini-meal that is called “le goûter” (afternoon snack) between 4:00 p.m. and 6:00 p.m. And finally, the last meal of the day is dinner, which takes place between 6:30 and 9:00 p.m., depending on families and people.

The latest hour for a class will depend on your course of study. However, in France classes seldom take place beyond 8:00 p.m.



## ■ THE FIRST DAYS

### ■ UPON ARRIVAL IN FRANCE FOR STUDENTS UNDER PARTNERSHIP AGREEMENTS

As soon as you arrive in France, you will have to contact “le Service des Relations Internationales” (SRI) (the International Relations Department) (Le Béal 2 building - 1st floor - La Garde Campus). A team will be there to welcome you and help you with administrative formalities.

For any information, please do not hesitate to contact the members of the International Relations Department, in particular Marielle TROPINI and Coralie MIGLIASSO who are in charge of incoming students: [sri@univ-tln.fr](mailto:sri@univ-tln.fr).

You can also consult the website of the University of Toulon under the heading [International - Venir à Toulon](#) (International section - Coming to Toulon).

### ■ UPON ARRIVAL IN FRANCE FOR STUDENTS WHO ARE NOT UNDER PARTNERSHIP AGREEMENTS

As soon as you arrive in France, you must contact the registration department to make an appointment online at the following address: [www.univ-tln.fr](http://www.univ-tln.fr) under the heading “Rubrique Inscriptions – Etudiant Etranger” (Foreign Student Registration).

On the day of your arrival, a team will be there at V1 building - Ground Floor - La Garde campus to welcome you and help you with administrative formalities.

You will have to show the notification of the decision sent to you by the University in order to have it validated for final registration, as well as your passport for visa checking.

For further information, do not hesitate to contact the admissions department at +33 (0)4 94 14 29 09 or by email: [admission@univ-tln.fr](mailto:admission@univ-tln.fr).



As soon as you arrive in France, the International Relations Department will be present to welcome you at the La Garde Campus.

Before your arrival, we advise you to look for the practical information you need in this guide.

### ■ DOCUMENTS YOU HAVE TO BRING WITH YOU

#### For all foreign students

- Identity card or passport (valid)
- D Visa for students outside Europe
- European Health Insurance Card for Europeans
- Health Insurance Certificate for the period of study at UTLN for non-Europeans
- A birth certificate (original) with filiation and official translation
- Proof of Civil Liability insurance (it is possible to take out this insurance in France)

#### For students in exchange programs (Erasmus+, BCI/Crepuq, partnerships, Free Mover...)

- Valid student card from the university of origin (for the current year)
- Study contract

#### For students who validate their diploma at UTLN

- Notification of admission to UTLN for students outside Europe
- Proof of financial resources
- Diplomas obtained in the country of origin (translated into French and certified copies of the original)
- Proof of enrolment for UTLN students in delocalized programs
- Certificate of B2 level in French according to the Common European Framework of Reference for Languages (DELTA, DALF, TDF, TEF...)





## ■ LE SERVICE DES RELATIONS INTERNATIONALES (SRI) (THE INTERNATIONAL RELATIONS DEPARTMENT)

France is the first non-English-speaking host country in the world.

Created in the 1990s, the International Relations Department is responsible for helping students and staff of the University of Toulon complete the formalities prior to departure abroad. In addition, the SRI also welcomes and accompanies international students on the different campuses of the University of Toulon.

The International Relations Department is the main contact for all mobility requests. It provides day-to-day administrative support to students and university staff, as well as to foreign students and guest researchers. In short, the main aim of the SRI is to maintain the international relations of the University of Toulon. These relations enable the development of new partnerships and may lead to participation in fairs or forums in different countries around the world. In keeping with its missions, this department also participates in the implementation of international training programs.

In order to best accompany international students in their French experience, the SRI organizes numerous events often dedicated to the integration of students and to putting them in touch with their peers in a spirit of sharing and conviviality.

The International Relations Department welcomes you on the La Garde campus in the BEAL 2 building. It is open to the public from Monday to Thursday, from 9:00 a.m. to 4:00 p.m. and on Fridays by appointment.

## ■ YOUR CONTACTS

Main contact: [sri@univ-tln.fr](mailto:sri@univ-tln.fr)

### Sylvia NOVEL

Head of Department

Tel: +33 (0)4 94 14 29 08

Email: [sylvia.novel@univ-tln.fr](mailto:sylvia.novel@univ-tln.fr)

### Valérie ALBERT

Administrative and Financial Management/Agreements

Tel: +33 (0)4 94 14 20 44

Email: [valerie.albert@univ-tln.fr](mailto:valerie.albert@univ-tln.fr)

### Marielle TROPINI

Incoming Mobility Europe

Tel: +33 (0)4 94 14 21 37

Email: [marielle.tropini@univ-tln.fr](mailto:marielle.tropini@univ-tln.fr)

### Coralie MIGLIASSO

Incoming and Outgoing Mobility Outside Europe

Tel: +33 (0)4 94 14 28 34

Email: [coralie.migliasso@univ-tln.fr](mailto:coralie.migliasso@univ-tln.fr)

### Aimeline ALET

Outgoing Mobility Erasmus+

Tel: +33 (0)4 94 14 22 65

Email: [aimeline.alet@univ-tln.fr](mailto:aimeline.alet@univ-tln.fr)

### Odette FAVENNEC

"Français Langue Etrangère" (FLE) (French as a Foreign Language) Teacher

Email: [odette.favennec@univ-tln.fr](mailto:odette.favennec@univ-tln.fr)





## ■ COMMUNITY LIFE

The University of Toulon supports student community life. Indeed, student associations play an important role as they animate campus life, promote exchanges and allow students to develop their imagination and creativity.

Various resources are available to support them and enable all of them to carry out their projects in various fields (sports, cultural, humanitarian, etc.).

Consult all the information related to student community life: <http://www.univ-tln.fr/-Vie-associative-.html>

### ■ CHARTER OF STUDENT ASSOCIATIONS AND DIRECTORIES

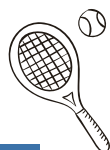
**The charter of student associations of the University of Toulon** aims at promoting the development of student community life on the campuses of the university.

It sets out the principles and procedures that condition the recognition of a student association as a «student association of the University of Toulon».

Students who have an associative project can be supported by “le Service Vie Etudiante” (Student Community Life Department) in their endeavors.

**Several student associations are present** at the University of Toulon.

You will find all the information about them (field of activity, contact) in this directory: <http://www.univ-tln.fr/Charte-des-associations-et-Annuaire.html>



## ■ THE UNIVERSITY PHYSICAL AND SPORTS ACTIVITIES DEPARTMENT (SUAPS)

The University Physical and Sports Activities Department organizes all types of activities in the numerous sports facilities of the University of Toulon and of the greater Toulon area and allows students to practice :

- More than thirty physical activities (individual, team sports, racket sports, martial arts...)
- Unforgettable training periods and sports events (skiing weekends, volleyball and climbing nights...)
- University competitions.

The University of Toulon also allows “les sportifs de haut niveau” (SHN) (High-Level Sportsmen and women), or those recognised as such, to obtain special studying arrangements and thus reconcile a sports career with their studies.

The SUAPS is located on the La Garde campus in the EVE building, Entrance 1 - 1st floor.

The SUAPS can be reached via the following email: [suaps@univ-tln.fr](mailto:suaps@univ-tln.fr) or on the department's website: <http://sport.univ-tln.fr>

More than 35 physical activities are offered to students. They take place between 12.00 noon and 2.00 p.m., from 6.00 p.m. and on Thursday afternoons. Among these physical activities, we can find:

### ■ INDIVIDUAL SPORTS

- Athletics CrossFit/ cross training
- Fitness
- Track cycling
- Gymnastics
- Hip-hop
- Strength training
- Swimming
- Aqua gym
- Pilates
- Salsa
- Stretching
- Yoga

### ■ TEAM SPORTS

- Basketball
- Football
- Futsal
- Handball
- Men's and Women's Rugby
- Volleyball

### ■ COMBAT SPORTS

- Boxing
- Kempo boxing

### ■ RACKET SPORTS

- Badminton
- Paddle tennis
- Tennis

### ■ WATER AND NATURE SPORTS

- Water activities
- Rowing
- Climbing
- Windsurfing
- Scuba diving

Practicing one of these activities can allow the student to earn bonus points that will be taken into account in his/her diploma. It is also possible to enroll in one of the above-mentioned sports activities as part of personal training. Attendance at classes is therefore not compulsory but is strongly recommended for students who wish to improve their physical and sporting abilities.

Find all the information about SUAPS registration [on this page](#).





## ■ THE LANGUAGE RESOURCE CENTER (CRL)

Would you like to improve your foreign language skills? Talk with students from around the world? Get together to watch an original-language movie? Or just practice a foreign language with fellow-students over a cup of tea? The Language Resource Center welcomes you every day of the week!

In addition to meetings with students of all nationalities, the Language Resource Center gives you free access to digital and multimedia tools to reinforce your knowledge. You will thus be able to practice English, Spanish, Italian, German, or perfect your knowledge of French.

Foreign students have the opportunity to become instructors to help their French peers discover their languages and cultures.

## ■ THE CRL'S ACTIVITIES

With the CRL, you have the opportunity to participate regularly in conversation sessions in foreign languages: no need to register, just show up!

According to a schedule that changes every six months depending on recruitment, lunches in English, German, Spanish or Italian are offered every day of the week: don't forget your sandwich!

The CRL is also a place for linguistic and cultural exchange, to learn French and other languages in a relaxed atmosphere and meet other students.

## ■ BUDDY PROGRAM

The Buddy Program is a system enabling the sponsorship of international exchange students by students of Toulon. This sponsorship system is set up and managed by "le Service des Relations Internationales" (SRI) (International Relations Department).

This program offers **foreign students the opportunity to have contact with a student of the University of Toulon before their arrival in France**. The idea is to create a link between the students before the start of the classes so that the newcomers are not alone during their first days. Moreover, this allows the incoming student to reassure themselves and to ask any questions concerning their departure in order to prepare their stay.

What is a **Buddy**? A Buddy is a student of the University of Toulon who is interested in other languages and cultures and who wishes to welcome an international student to help him/her discover his country, practice his/her language and open up to a new culture. A Buddy can help you **overcome your difficulties** by using your own language to inform you about studies at the University of Toulon or about life in France:

- Before your arrival: by answering your questions and advising you by email, phone or WhatsApp
- On arrival: by welcoming you and introducing you to the university and how it works, by helping you with your administrative formalities (registration, bank, insurance, etc.), by helping you discover your new world (accommodation, transportation, supermarkets, places to go out, cultural activities, etc.).

To participate in the sponsorship program, you must **download and fill in the sponsor application form** available on the university website: <http://www.univ-tln.fr/Buddy-Program.html>.

## ■ UNIVERSITY LIBRARIES

The University of Toulon has a network of five university libraries spread over the different campuses.

- Bibliothèque Campus La Garde (La Garde Campus Library)
- Bibliothèque Droit Draguignan (Draguignan Library of Law)
- Bibliothèque Droit Toulon (Toulon Library of Law)
- Bibliothèque Eco-Gestion-Médias (Library of Economics, Management and Media Studies)
- Bibliothèque SeaTech (SeaTech Library)

The staff will be present to welcome you and train you in the methodology of documentary research.

[The Libraries website](#) gives you access to the catalogue, documentary resources and all the services of the library network.







## ■ PERFECTING YOUR FRENCH

To make the most of your stay in a foreign country, it is strongly recommended that you know and master the language and culture of the host country. This is why the University of Toulon offers French courses specifically designed for international students.

### ■ LANGUAGE INTEGRATION WEEK

As part of the exchange programs, the University of Toulon offers you the opportunity to take part in a free intensive training week which acts as an «integration week in France» to enable you to improve your French language skills. This week is open to exchange students wishing to participate, whatever their language level. This integration week is part of the compulsory FLE course for all exchange students in order to obtain ECTS to validate the diploma in the home university, including double diplomas. The courses are therefore organized in two groups according to level and are structured around four levels of teaching: beginner - elementary and intermediate - advanced. The course includes 10 hours of teaching divided into language classes, educational field trips and intercultural encounters.

To participate, registration is compulsory. To register, simply indicate your wish to participate in this week when you apply for an exchange program on our MoveOn portal.

## ■ FRENCH AS A FOREIGN LANGUAGE (FLE)

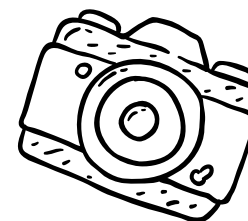
Courses in French as a Foreign Language are advanced courses offered free of charge by the University of Toulon. These courses are compulsory for exchange students but are not compulsory for all other international students registered at the UTLN who can however follow them as well.

The “Français Langue Etrangère” (French as a Foreign Language) (FLE) courses will be validated by a certificate of attendance and level achievement. For exchange students, these courses can validate 5 ECTS credits per semester.

The course consists of 100 hours, spread over two semesters: from September to the end of May, i.e. 50 hours of classes per semester spread over 12 weeks.

To enable you to improve at your own pace, we will offer you on arrival to take a placement test to separate you into different groups.

To participate in these FLE courses, it is imperative to register with the International Relations Department.







[Preparing for your departure](#)

[Studying at the University of Toulon](#)

[Financing your stay](#)

[Living in Toulon](#)

[Things to do in Toulon](#)

[Frequently Asked Questions section](#)

[Contacts](#)



# FINANCING YOUR STAY



## HOUSING AID

It is possible to find accommodations near our campuses in private student residences and homestays or in the CROUS university residences. For more information, please consult our brochure on our website under the heading: [www.univ-tln.fr/Logements.html](http://www.univ-tln.fr/Logements.html).

Financial aid for housing exists in France, known as “**Aides Personnalisées au Logement**” (APL) (personalized housing aid). To obtain it, you must apply to the Caisse des Allocations Familiales (CAF) (Family Benefits Fund).

This aid is granted only if your application fulfils the award criteria and the time limit for the first payment is approximately 2 months.

## OPENING A BANK ACCOUNT IN FRANCE

To open a bank account, you will need **a certain number of documents**:

- Your passport
- A proof of residence less than three-month-old (apartment rental contract, water, electricity, Internet bill...)
- A proof of registration at the University

Once your French bank account has been opened, you can obtain a **credit card**, a **chequebook** (on request) and “**un Relevé d'Identité Bancaire**” (RIB) (bank statement). The latter contains the bank details to be given to make transfers. It is generally easier to pay electricity and Internet bills by bank transfer than by cheque.

Ideally, **a fortnight before leaving**, if you do not intend to make any other trips to France, it is preferable to **close your bank account**. Don't forget at this stage to also close all accounts with automatic debit payments. However, be careful not to wait for payments of housing assistance, scholarship or repayment of deposit / rent before closing the account.

## FINDING A STUDENT JOB

As far as student jobs are concerned, the University of Toulon recognizes the real added value of hiring students. Contracts between the university and students allow, among other things:

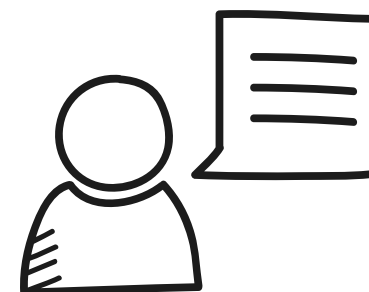
- To increase the quality of service to the public by improving reception and support of students, by extending opening hours
- To recognize their ability to act as responsible adults
- To support the social situation of students by offering them a job in a rewarding environment

For more information about student jobs at the University of Toulon, please visit: <http://www.univ-tln.fr/Emplois-etudiants-a-l-universite.html>

Job application platform: <http://emplois-etudiants.univ-tln.fr>

You can also find a student job outside the university through different addresses such as:

- <https://toulon.fr>,
- <https://www.pole-emploi.fr>,
- <https://www.indeed.fr>,
- <https://www.meteojob.com>,
- <https://www.jobaviz.fr>,
- <https://www.regionsjob.com>





[Preparing for your departure](#)

[Studying at the University of Toulon](#)

[Financing your stay](#)

[Living in Toulon](#)

[Things to do in Toulon](#)

[Frequently Asked Questions section](#)

[Contacts](#)



# LIVING IN TOULON



## ■ GETTING AROUND TOULON

If you have your driving license, there is **no need to take any steps to drive in France**. You can drive legally with your foreign driving license. However, for long-term stays, it is preferable **to register your driving license at the Var prefecture** in order to obtain a duplicate in case of problems (theft, loss...). In addition, in the event of a breach of the French Highway Code, you will be asked to exchange your driving license for a French driving license at the Var prefecture so that penalties can be applied.

### ■ COMING TO LA GARDE

To get to the La Garde campus by bus, there are two options:

- **“Le réseau Mistral”** (the Mistral network) whose U, 55, 129, 103 and 29 lines serve the La Garde campus. 2 stops are recommended: **the Campus La Garde/ La Valette stop** and **the Université Entrée Sud (La Planquette) stop**. If you have difficulties in your choice of transportation from the Mistral network, you can also go to [www.reseaumistral.com](http://www.reseaumistral.com) or contact the following number directly: +33 (0)4 94 03 87 03.
- **“Le réseau ZOU”** (the ZOU network) whose 4081, 4802, 7801, 7802, 8810 and 8814 lines serve the La Garde campus. The recommended stop is **Université Nord**. If you encounter difficulties in your choice of transportation from the ZOU network, you can also go to [www.maregionsud.fr](http://www.maregionsud.fr) or contact the following number directly: +33 (0)4 94 36 38 00.

### ■ COMING TO TOULON

To get to the Toulon campus, you have two options:

- **The Mistral network** whose U, 1, 9, 10, 11, 19, 29, 36, 39, 102 and 103 lines serve the Toulon campus. 3 stops are recommended: **the Campus porte d'Italie stop, the Champ de Mars stop and the Bir Hakeim stop**. If you encounter difficulties in your choice of transportation from the Mistral network, you can also go to the website [www.reseaumistral.com](http://www.reseaumistral.com) or contact the following number directly: +33 (0)4 94 03 87 03.
- **The ZOU network** whose 2801, 2821, 4801, 4802, 8804, 8805, 8810 and 8814 lines serve the Toulon campus. The recommended stop is **Champ de Mars - Campus Porte d'Italie**. If you encounter difficulties in your choice of transportation from the ZOU network, you can also go to [www.maregionsud.fr](http://www.maregionsud.fr) or contact the following number directly: +33 (0)4 94 36 38 00.



## ■ ACCOMMODATIONS, APARTMENT RENTALS AND SHARED ACCOMMODATIONS

### ■ ACCOMMODATIONS

**Are you looking for an accommodation?** Several possibilities are available to you, but first you need to ask yourself the right questions.

If your stay is short, it is preferable to choose an «all-inclusive» accommodation, such as a furnished apartment or university residence, which requires fewer administrative formalities.

It is necessary to sign a rental contract (or lease) in order to obtain an accommodation. The rent is usually paid **at the beginning of each month**. You have the option of asking your landlord for a receipt, called “une quittance de loyer” (a rent receipt), to prove the payment of the rent.

### ■ WHAT ARE THE REQUIREMENTS FOR SIGNING A LEASE?

- First of all, it is necessary to have **a guarantor** (a person residing in France, who has paid taxes for more than 3 years and who has sufficient income to pay the rent if you stop paying it). You also have to pay the full monthly instalments when you move into the accommodation. You can also apply for “la garantie Visale” (the “Visale” guarantee) of “Action Logement” (housing aid) if you do not have a guarantor. For more information go to <https://www.visale.fr>
- Secondly, you have to make a security deposit, i.e. pay a deposit that will be returned to you within 2 months after leaving the accommodation if the accommodation is in the same condition as when the tenant arrived. The landlord is authorized to deduct from this sum the amount necessary for repairs in the event of damage.

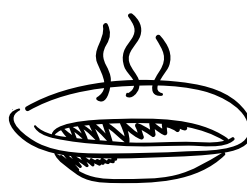




- Finally, it is necessary to take out a multi-risk home insurance policy that will cover the risks of fire, water damage, theft, etc. Student mutual insurance companies and banks offer this insurance. You have to inquire about it at the time of your registration or when opening a bank account.

There are 3 main categories of accommodations:

- **Accommodations in student residences** (they have the advantage of being close to the place where you will be studying and of being cheap. You can locate the residences close to your institution thanks to the following website: <https://www.adele.org>)
- **Private housing** (These accommodations can be rented by anyone, at any time of the year, even for short periods. Here are some useful sites for finding apartments: <https://www.leboncoin.fr>, <https://www.seloger.com>, <https://www.logic-immobilier.com>, <https://www.adele.org>)
- **Rooms in university residences** ("Cités U") "le Centre Régional des Oeuvres Universitaires et Scolaires" (CROUS) (French body in charge of coordinating university social services for students) offers simple or renovated rooms, from 9 to 15m<sup>2</sup> (97 to 161 ft<sup>2</sup>). The rooms are generally equipped with a washbasin, a desk, one or two chairs, a single bed with mattress, blanket, bolster and pillow. These residences are located close to each university campus and are an ideal solution for students with modest incomes. To apply for accommodation, you must register on the [messervices.etudiant.gouv.fr](https://messervices.etudiant.gouv.fr) and reconnect to it from 9 July 2020.



## ■ CATERING

### ■ IN LA GARDE

There are 3 options to eat on the La Garde campus:

- Le Coudon (**University Restaurant**)
- Le Béal (**Cafeteria**)
- Le P'tit Béal and le Rouge et le Noir (**sandwich bars**)
- Different restaurant chains in the **Avenue 83** and **Grand Var** shopping centers.

### ■ IN TOULON

There are also 3 options to eat on the Toulon campus:

- **University Restaurant** at the Faculty of Law l'Escarpe (cafeteria)
- Various restaurant chains in the **Mayol** shopping center.

In the restaurants and cafeterias of the University, payment for meals is made with your student card by activating your IZLY account: [www.izly.fr](http://www.izly.fr).

## ■ MOBILE PHONE SUBSCRIPTIONS AND INTERNET ACCESS PROVIDERS

Orange, Bouygues Telecom, SFR and Free are mobile phone and Internet access providers located in the «Grand Var», «Mayol» and «Avenue 83» shopping centers. They offer packages and contracts to suit your needs.

Some accommodations are already equipped with wifi connection like the CROUS accommodations as well as some accommodations in student residences.

To have access to the Internet in a private accommodation, you have to go through one of the operators to take out a subscription of your choice.



## HEALTH

### UNIVERSITY HEALTH CENTER

“Le Service Universitaire de Médecine Préventive et de Promotion de la Santé” (SUMPPS) (The University Service of Preventive Medicine and Health Promotion) is a university health center on the La Garde site (EVE building - Entrance 2, Ground floor).

It offers free preventive medical consultation, psychiatry and psychology consultations, and general medicine consultations eligible to the free-waiver system.

Students in vulnerable situations, particularly those with disabilities, are entitled to individualized support after an assessment of their needs.

#### Walk-in services:

- Reception, listening, counseling, information and documentation
- General medicine consultations on the La Garde site only
- Nursing care
- Vaccination check-ups
- Referral to health professionals

#### Services requiring an appointment or an invitation:

- Compulsory preventive consultations during the 1st cycle of studies, medical checks for students at professional risk. This consultation with a nurse and/or a doctor is an opportunity for a health check-up
- Medical certificates for sports practice
- Attendance and examination arrangements for students with disabilities, in connection with “la Mission Handicap” (Disabilities Assistance Service)
- Consultations with a doctor specializing in psychiatry
- Consultations with a psychologist

It also offers :

- The possibility to test your eyesight, hearing
- Condoms, earplugs
- Emergency contraception

In addition, the SUMPPS is present on the Toulon site: Faculty of Law, offices n°11 and 16. Tuesdays from 8.00 a.m. to 12.00 noon and 12.30 p.m. to 4.30pm. For nursing care only.

Tel: +33 (0)4 94 14 24 89

Mail: [sumpps@univ-tln.fr](mailto:sumpps@univ-tln.fr)

### STUDENTS WITH DISABILITIES SUPPORT AND ASSISTANCE

If you have a disability, several possibilities exist for the success of your studies and your student life. Indeed, you are entitled to individual arrangements for attendance and examinations. After medical advice from the SUMPPS, the Mission Handicap offers you an adapted solution: note-taker in class, exam secretary, use of specific equipment...

For more information, go to the corresponding section of the University of Toulon website:

<http://www.univ-tln.fr/-Handicap-.html>.

You can also reach the team by phone: +33 (0)4 94 14 67 45 - +33 (0)6 03 16 94 66, or by mail:

[mission.handicap@univ-tln.fr](mailto:mission.handicap@univ-tln.fr)



### SOCIAL SERVICES

Social workers welcome you by appointment **to listen to you and advise you** on:

- scholarships and social aid
- specialized services: jobs, housing search, student associations, medical and psychological center, processing of special financial aid applications.

The social services are located on the La Garde campus, EVE building, entrance 2.

You can contact 3 social workers depending on your needs:

- Mrs. CHAUDY, the CROUS social worker (La Garde and Toulon campuses). Appointments are made online on the [www.crous-nice](http://www.crous-nice) website - “Service social” (social services) section.
- Mrs. VAUTIER-YVON, social worker at the University of Toulon (La Garde and Toulon Campuses). To make an appointment, call: +33 (0)4 94 14 21 19 Mondays and Fridays from 2.00 p.m. to 4.00 p.m.
- Mrs. TERROU, social worker at the University of Toulon (La Garde and Draguignan Campuses). To make an appointment, call: +33 (0)4 94 14 21 01 Tuesdays and Thursdays from 2.00 p.m. to 4.00 p.m.

[Preparing for your departure](#)[Studying at the University of Toulon](#)[Financing your stay](#)[Living in Toulon](#)[Things to do in Toulon](#)[Frequently Asked Questions section](#)[Contacts](#)

# THINGS TO DO IN TOULON



## ■ MUSEUMS

### ■ ART MUSEUM OF TOULON

The Art Museum, labelled «Musée de France», has a collection of ancient and modern, contemporary and Asian art and of photographs.

Useful information:

Address: 113, av. Général Leclerc

Tel: +33 (0)4 94 36 87 20

### ■ NATIONAL MARITIME MUSEUM

This museum is not only the National Maritime Museum but also a museum of art and history, science and technology, human adventure and popular traditions, a center of maritime culture.

Useful information:

In August, the museum is open every day from 10.00 a.m. to 6.00 p.m. From September to June, the museum is open every day from 10.00 a.m. to 6.00 p.m., except Tuesdays.

Address: Place Monsenergue (entrance to the Arsenal)

Tel: +33 (0)4 22 42 02 01

Website: <http://www.musee-marine.fr>

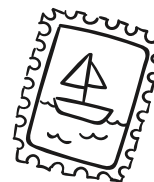
### ■ HISTORY MUSEUM OF TOULON AND ITS REGION

This museum will allow you to rediscover the city of Toulon through numerous historical works of art. You will also have access to the library, which is used by many students.

Useful information:

Address: 10, rue Saint-Andrieu

Tel: +33 (0)4 94 62 11 07



### ■ HOUSE OF PHOTOGRAPHIC ART

This museum founded in 2002 and located in the heart of the old town allows regional artists to make themselves known, it therefore acts as a springboard for them. It also allows its visitors to discover or rediscover the work of international photographers and in particular those who influence the different trends in photography.

Useful information:

Opening hours: free admission from Tuesday to Saturday from 12.00 noon to 6.00 p.m.

Address: Rue Nicolas Laugier - Place du globe

Tel: +33 (0)4 94 93 07 59

Mail: [culture@mairie-toulon.fr](mailto:culture@mairie-toulon.fr)

### ■ HOME OF THE ARTS OF THE VAR DEPARTMENT

The Hôtel départemental des Arts or Hôtel des Arts de Toulon (Toulon Home of the Arts) is a cultural center presenting art from the second half of the 20th century to the present day.

Useful information:

Address: Centre d'art du Var 236, av. Général Leclerc

Tel: +33 (0)4 83 95 18 40

### ■ MUSEUM OF THE VAR DEPARTMENT

This museum located in the heart of the Las departmental garden, which is classified as a sensitive natural area, is a natural history museum. It will allow you to discover the biodiversity of the region. Indeed,

its staff is in charge of the acquisition, the conservation as well as the presentation of the collections. The main goal is to make visitors aware of this diversity.

Useful information:

Address: Jardin départemental du Las - 607, chemin du Jonquet

Tel: +33 (0)4 83 95 44 20

Website:

<https://museum.var.fr/ws/home/app/collection/expo>

### ■ MUSEUM OF ASIAN ARTS

This museum brings together the acquisitions made in the Far East, India, Tibet and South-East Asia by sailors from Toulon.

Useful information:

Opening hours: free admission from Tuesday to Saturday from 12.00 noon to 6.00 p.m.

Address: 169, littoral Frédéric Mistral

Tel: +33 (0)4 94 36 83 13

Mail: [culture@mairie-toulon.fr](mailto:culture@mairie-toulon.fr)

### ■ PROVENCE LANDING MEMORIAL MUSEUM

It is located at the top of Mount Faron. To get there, you can take the dizzying mountain road if you are a daredevil or the funicular if you are in a contemplative mood and wish to admire the panorama.

Useful information:

Address: at the top of Mount Faron

Tel: +33 (0)4 94 88 08 09 (contact the Memorial before your visit to find out about its opening days and hours)

Website:

<https://www.onac-vg.fr/hauts-lieux-memoire-necropoles/memorial-du-debarquement-et-de-la-liberation-de-provence-mont-faron>







## ■ JEAN AICARD-PAULIN BERTRAND MUSEUM

This museum will take you back in time as you discover the home of the poet and novelist Jean Aicard. The family house «Les Lauriers Roses» (Pink Laurel Trees) will allow you to discover the daily life of the artist as well as his art collection: art objects, sculptures, paintings, furniture.

Address: Musée Jean Aicard - Paulin Bertrand 705 av. du 8 mai in La Garde

Tel: +33 (0)4 94 36 33 30

Website: <http://webdfine.free.fr/mjapb/index.html>

## ■ THEATERS

### ■ THE LIBERTÉ THEATER-NATIONAL THEATER

Address: Grand Hôtel - Place de la Liberté 83000 TOULON

Website: <https://www.theatre-liberte.fr>

Tel: +33 (0)4 98 00 56 76

Email: [reservation@theatreliberte.fr](mailto:reservation@theatreliberte.fr)

Online booking: [www.theatre-liberte.fr](http://www.theatre-liberte.fr)

### ■ CHÂTEAUVALLON - NATIONAL THEATER

Opening hours: Tuesday to Friday from 11.00 a.m. to 6.00 p.m. and on Saturdays (performance days)

Website: <http://www.chateauvallon.com>

Tel: +33 (0)4 94 22 02 02

Email: [reservation@chateauvallon.com](mailto:reservation@chateauvallon.com)

### ■ CAFÉ-THÉÂTRE DE LA PORTE D'ITALIE

Address: Place Armand Valle, 83000 Toulon

Tel: +33 (0)4 94 36 34 59

### ■ ESPACE LE COMÉDIA

Address: Espace Comedia, 10 rue Orvès, Le Mourillon, 83000 Toulon

Website: <https://www.le-comedia.fr>

## ■ TOULON OPERA HOUSE

Address: Toulon, Place Victor Hugo

Tel: +33 (0)4 94 03 87 03

Website: <https://www.operadetoulon.fr>

## ■ CONCERT HALLS AND SHOWS

### ■ ZÉNITH OMÉGA

Address: ZÉNITH DE TOULON OMÉGA & OMÉGA LIVE  
Boulevard du Commandant Nicolas

Website: <http://www.zenith-omega-toulon.com/fr/billetterie>

Tel: +33 (0)4 94 22 66 77

Email: [contact.zen@zenith-omega-toulon.com](mailto:contact.zen@zenith-omega-toulon.com)

### ■ LE TÉLÉGRAPHE

Address: Rue Hippolyte Duprat, 83000 Toulon

Website: <https://letelegraphe.org/fr/le/blog>

Tel: +33 (0)4 94 24 04 04

### ■ L'HÉLICE

Address: 68 Avenue Victor Agostini, 83000 Toulon

Website: <https://www.lhelice.org>

Tel: +33 (0)4 94 24 72 74

## ■ CULTURAL ACTIVITIES AT UTLN

There are many cultural activities at the University of Toulon:

- Free art practice workshops: singing, music, photography, drama, drawing etc.
- On-campus shows, exhibitions and conferences about various scientific fields
- Free or 1-euro cultural visits on Métropole TPM and Draguignan
- Creation of artistic projects with artists



## ■ WHERE TO PRACTICE SPORTS

### ■ SO GOOD FITNESS

238 av Lices, 83000 TOULON

Services offered: Sports and leisure facilities

### ■ COURS FÉNELON

251 rue Pourquoi Pas, 83000 TOULON

Services offered: Volleyball court, indoor football field, handball court, table tennis room, football field, climbing wall, basketball court

### ■ CENTRE BIEN-ÊTRE

399 rue Montserrat, 83200 TOULON

Services offered: Pilates, group classes, swimming pool, yoga, hammam, aqua bike, aqua gym, sauna

### ■ FITNESS PARK

Zac Besagne Dustasta Ferail r Mûrier, 83000 TOULON

Services offered: Sports Club

### ■ COLLÈGE PEIRESC

bd Strasbourg, 83000 TOULON

Services offered: Fitness room, gymnastics, weightlifting, martial arts

### ■ LYCÉE PROFESSIONNEL RÉGIONAL DU PARC SAINT JEAN

Address: Pl 4 Septembre, 83100 Toulon

Tel: +33 (0)4 94 03 93 93

Services offered: Volleyball court, weightlifting room, handball court, table tennis room, basketball court





## TOURIST ATTRACTIONS

### MONT FARON

It is one of the mountains surrounding Toulon. It culminates at 584 meters. A funicular is available and allows you to reach the top from the city of Toulon. The top is also accessible by car, by a one-lane road. Driving to the top of Mont Faron will offer you breathtaking views of the city of Toulon and the sea.

At the top, you will find the Provence Landing Memorial and the Mont Faron Zoo.

### THE MILITARY HARBOR

Located in the heart of the city of Toulon, it is one of the main naval bases of the French army. Most of the naval action force is stationed there, including the aircraft carrier Charles de Gaulle, the Mistral-class amphibious helicopter carriers Tonnerre and Dixmude as well as the six Ruby-class nuclear attack submarines.

### COURS LAFAYETTE

This is the main thoroughfare in the center of Toulon. With its daily market, it encapsulates the traditions and scents of Provence.

### THE MOURILLON BEACHES

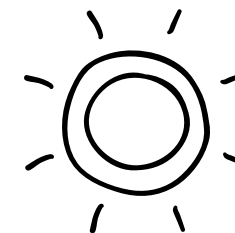
The Mourillon beaches have had the "Pavillon Bleu" (Blue Flag) label for many years: they are clean spaces with a high environmental quality. They will offer you many places to unwind, such as landscaped gardens, lawns, playgrounds, and a dozen bars and restaurants.

### LA CATHÉDRALE NOTRE-DAME-DE-LA-SEDS

Erected in the 5th century, the Notre-Dame-de-la-Seds or Sainte-Marie-de-la-Seds or Sainte-Marie-Majeure cathedral is a Catholic cathedral located in Toulon. It is also the seat of the diocese of Toulon. It has been classified as a historical monument since 1997.

### THE REMAINS OF THE FEUDAL CASTLE

Only a few parts of this castle, built from the 12th to the 15th century, are still visible today. Just below the ruins, you can find an old medieval walled garden that has been restored and decorated with aromatic and medicinal plants and flowers. The site offers a view of the town of Ollioules, its countryside and its cliffs down to the sea.





## ■ EXTEND YOUR RESIDENCE PERMIT OR PREPARE FOR YOUR RETURN

### ■ EXTEND YOUR RESIDENCE PERMIT

You have to carry out the formalities at the “préfecture” of your place of residence. In some cases, applications to renew your student residence permit can be submitted directly to your educational institution. Do not hesitate to ask the SRI or on the University’s website to find out. Very important: the application must be made within two months before the expiry date of your student residence permit or your student VLS-TS.

#### List of documents to be provided for the renewal of your student residence permit

- Your passport
- Your birth certificate with filiation (or the full copy if you hold a VLS-TS)
- Proof of residence
- Your student residence permit or your student VLS-TS
- 3 identity photos
- Registration (or pre-registration) documents from your higher education institution
- Proof of affiliation to the French health insurance system
- Proof of your academic results and class attendance
- Proof of financial resources. As a reminder, resources at least equal to 615€ per month are required in the embassies at the time of your VLS-TS visa application
- All documents in a foreign language must be accompanied by their official French translation

The renewal of the student residence permit is subject to a fee. The amount must be paid by tax stamps.

**It is €49 for a one-year residence permit or €71 for a multi-year residence permit.**

The card will be given to you at the counter of your “prefecture” or will be sent directly to your home (it depends on the local “prefecture”).

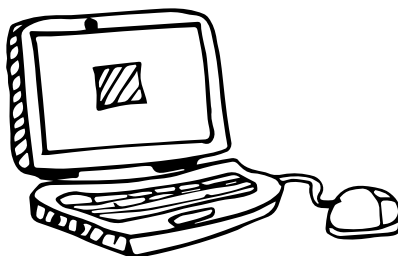
### ■ PREPARING FOR YOUR RETURN

Before leaving France, do not forget to terminate the contracts you signed in France, in particular:

- Bank account
- Caisse d’Allocations Familiales (CAF) (Family Benefits Fund)
- Mobile phone subscription
- Travel card
- Sports club memberships, library subscriptions etc.

#### To terminate your apartment lease: give your landlord two months’ notice

Two months before your departure, start taking the necessary steps to have enough time to terminate the contracts. If you have to send a letter, use a “Lettre recommandée avec Avis de Réception” (LRAR) (Registered Letter with Acknowledgment of Receipt), which means that the receipt is signed by the addressee and then returned to you.



[Preparing for your departure](#)[Studying at the University of Toulon](#)[Financing your stay](#)[Living in Toulon](#)[Things to do in Toulon](#)[Frequently Asked Questions section](#)[Contacts](#)

# FREQUENTLY ASKED QUESTIONS SECTION





## ■ HOW DO I ACTIVATE MY ONLINE STUDENT ACCOUNT?

Activation is done on the SESAME application: <http://sesame.univ-tln.fr> with the activation code you were given when you registered (on your registration file). After completing a few steps (identification, checking, signature of the IT charter and creation of the password), **your account is active immediately.**

The activation of your account is also necessary for the activation of the IZLY account allowing access to the CROUS university restaurants (see «How do I pay with my student card?»).

## ■ HOW DO I LOG IN TO THE VARIOUS DIGITAL SERVICES OF THE UNIVERSITY?

After activating your online student account via the SESAME application, you will be able to log in to the different digital services of the university. To do so, you need your **identifiers** (Login + Password) that you can find in part on your student card:

Login (username): for example name123 (in lower case without accents)

Password: the one you created when you activated your account via the SESAME application

## ■ HOW DO I ACCESS MY ONLINE TIMETABLE?

To access your online timetable, go to <https://planning.univ-tln.fr>

You can also synchronize your timetable with your own calendar: click on “exporter agenda au format iCal” (export calendar in iCal format) and follow the steps.

## ■ HOW DO I ACCESS MY GRADES AND EXAM RESULTS?

Access to your grades is done from your student account which is available at this address: <https://ent.univ-tln.fr>

After logging in to your account, scroll down to the “mon dossier Web” (My Web Folder) section and click on “Notes et résultats” (Grades and Results).

## ■ I WOULD LIKE TO CONTACT A TEACHER, HOW DO I DO THIS?

You can contact a teacher using his or her e-mail address which you can find in the University of Toulon directory at this address: <http://annuaire.univ-tln.fr>

## ■ HOW DO I PAY WITH MY STUDENT CARD?

The IZLY digital wallet is your means of payment to eat at the CROUS restaurants.

48h to 72h after your registration, check your student mailbox: IZLY will have sent you an email in which you will find all the information to activate your digital wallet. Once you have filled in the data, your IZLY account is immediately active.

If you have not received the email, go to the IZLY website: <http://www.izly.fr>, to “Mon espace IZLY”, then click on the link: “Vous n’avez pas reçu le mail d’activation de votre compte IZLY” (You did not receive the activation email for your IZLY account) and follow the steps (be careful: the only email address to be given is the email address provided by the university).

If you still do not receive it, you must contact the CROUS directly: [assistance-izly@crous-nice.fr](mailto:assistance-izly@crous-nice.fr)

Once your IZLY account has been credited (via bank transfer or via an IZLY terminal), you can use your student card to pay in CROUS restaurants and on compatible ATMs on campus.

## ■ HOW DO I CONNECT TO THE INTERNET AT THE UNIVERSITY?

Within the University of Toulon, you can connect to the network called “UnivToulon”. Use your login and password to connect.

## ■ I HAVE A QUESTION THAT IS NOT IN THE F.A.Q, WHO SHOULD I CONTACT?

Consult the «Contacts» section of this guide to get the contact details of the different departments of the university that can help you.





[Preparing for your departure](#)

[Studying at the University of Toulon](#)

[Financing your stay](#)

[Living in Toulon](#)

[Things to do in Toulon](#)

[Frequently Asked Questions section](#)

[Contacts](#)



# CONTACTS



## INTERNATIONAL RELATIONS DEPARTMENT

[sri@univ-tln.fr](mailto:sri@univ-tln.fr)

+33 (0)4 94 14 28 34

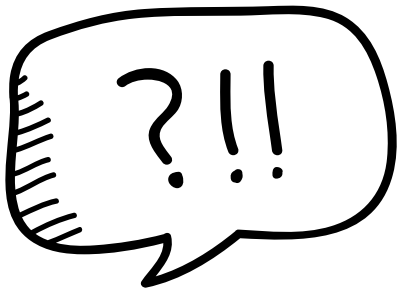
+33 (0)4 94 14 21 37

### Mailing address:

Université de Toulon  
Bâtiment le Béal 2 - CS 60 584  
83041 TOULON CEDEX 9

### Physical address:

Université de Toulon  
Avenue de l'Université  
Bâtiment Le Béal entrée 2  
83 130 LA GARDE



## EMERGENCY TELEPHONE NUMBERS

### HEALTH ISSUES

- Samu (Emergency Medical Assistance Service): 15
- Fire Brigade: 18
- European emergency number: 112
- SOS Médecins (emergency number for a doctor to come to your home):  
+33 (0)4 94 14 33 33 ou 36 24 (€ 0,12/min)
- SOS Veterinarians: +33 (0)8 99 70 77 24
- Hôpital Sainte Musse: +33 (0)4 94 14 50 40
- Hôpital Sainte Anne: +33 (0)4 94 11 31 31
- On-duty pharmacy: 32 37 (€ 0,34/min, 24/7)
- Emergency number for the deaf and hard of hearing: 114

### SECURITY

- National Police: 17
- Toulon Central Police Station: +33 (0)4 98 03 53 00
- La Garde Police Station: +33 (0)4 94 75 88 88
- Municipal Police: +33 (0)4 94 36 37 38
- National Emergency Number in case of a problem at sea (from the shore): 196

### EMERGENCY / REPAIRS

- Town Hall Services: 0 800 424 024 (toll-free number)
- Electricity emergency (ENEDIS): +33 (0)9 72 67 50 83
- Gas emergency (GrDF): 0 800 473 333
- Water supply emergency: +33 (0)9 69 329 328

### TRANSPORTATION

- Mistral network /To call for a bus: +33 (0)4 94 03 87 02
- Mistral network /Night taxi-bus: +33 (0)4 94 09 38 07
- Mistral network /Disabled people: +33 (0)4 94 03 87 48



Photos credits and illustrations

- [University of Toulon](#)
- [www.freepik.com](http://www.freepik.com)
- <https://thenounproject.com>
- [Adobe Stock](#)



Service des Relations Internationales

[www.univ-tln.fr](http://www.univ-tln.fr)



[@univtoulon](#)